

Health Care Facilities

GREEN BROOK TWP


SOMERSET

Legend

 Counties

 GREEN BROOK TWP

 Hospitals

 Nursing Homes

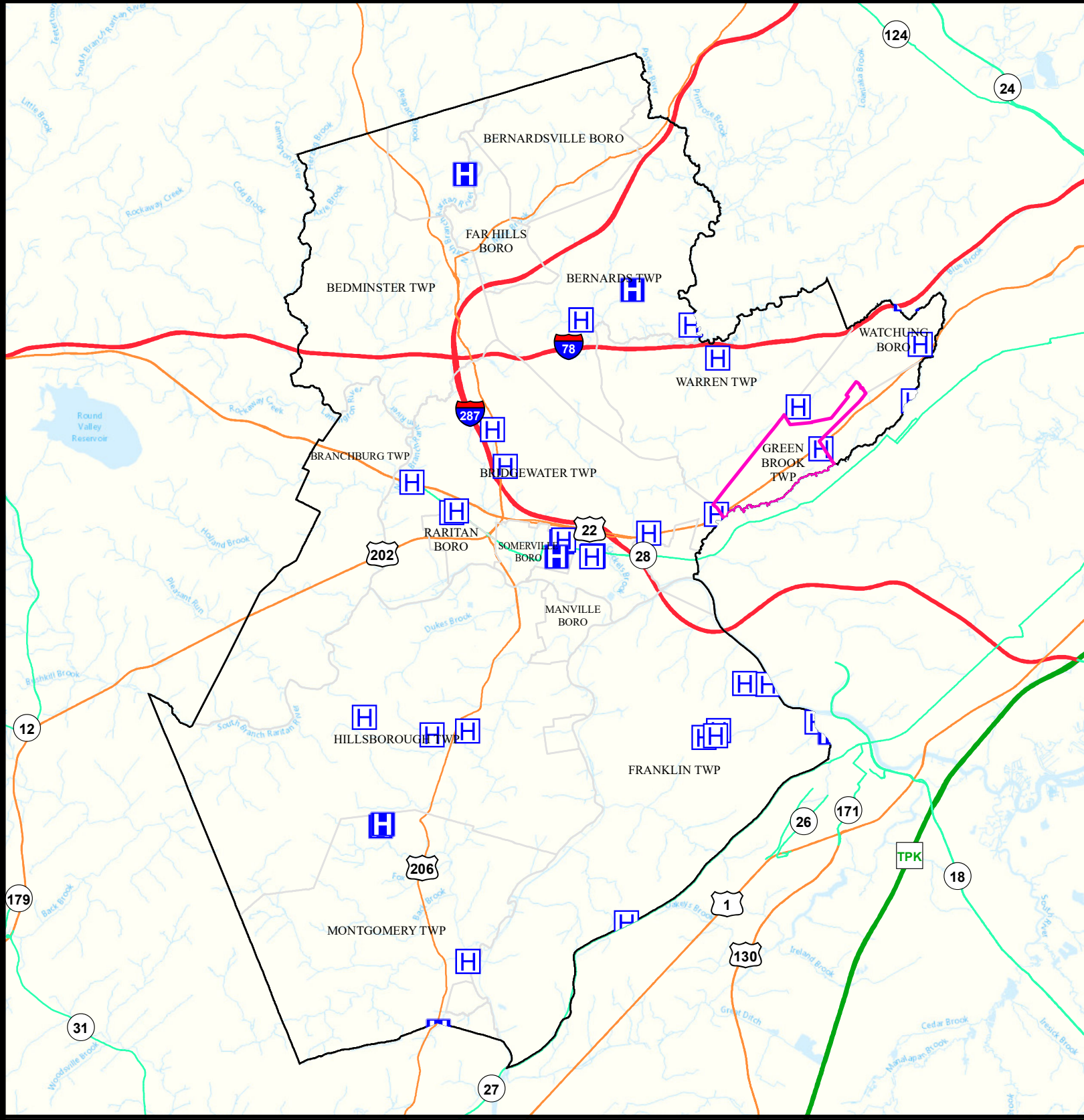
 Municipalities



Date: 9/26/2022

0 1.5 3

Miles













Air Cancer Risk



GREEN BROOK TWP

SOMERSET

Legend

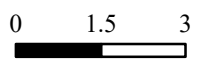
Risk per Million

	61 - 87		244 - 283
	88 - 108		284 - 351
	109 - 127		352 - 604
	128 - 145		194 - 243
	146 - 167		
	168 - 193		

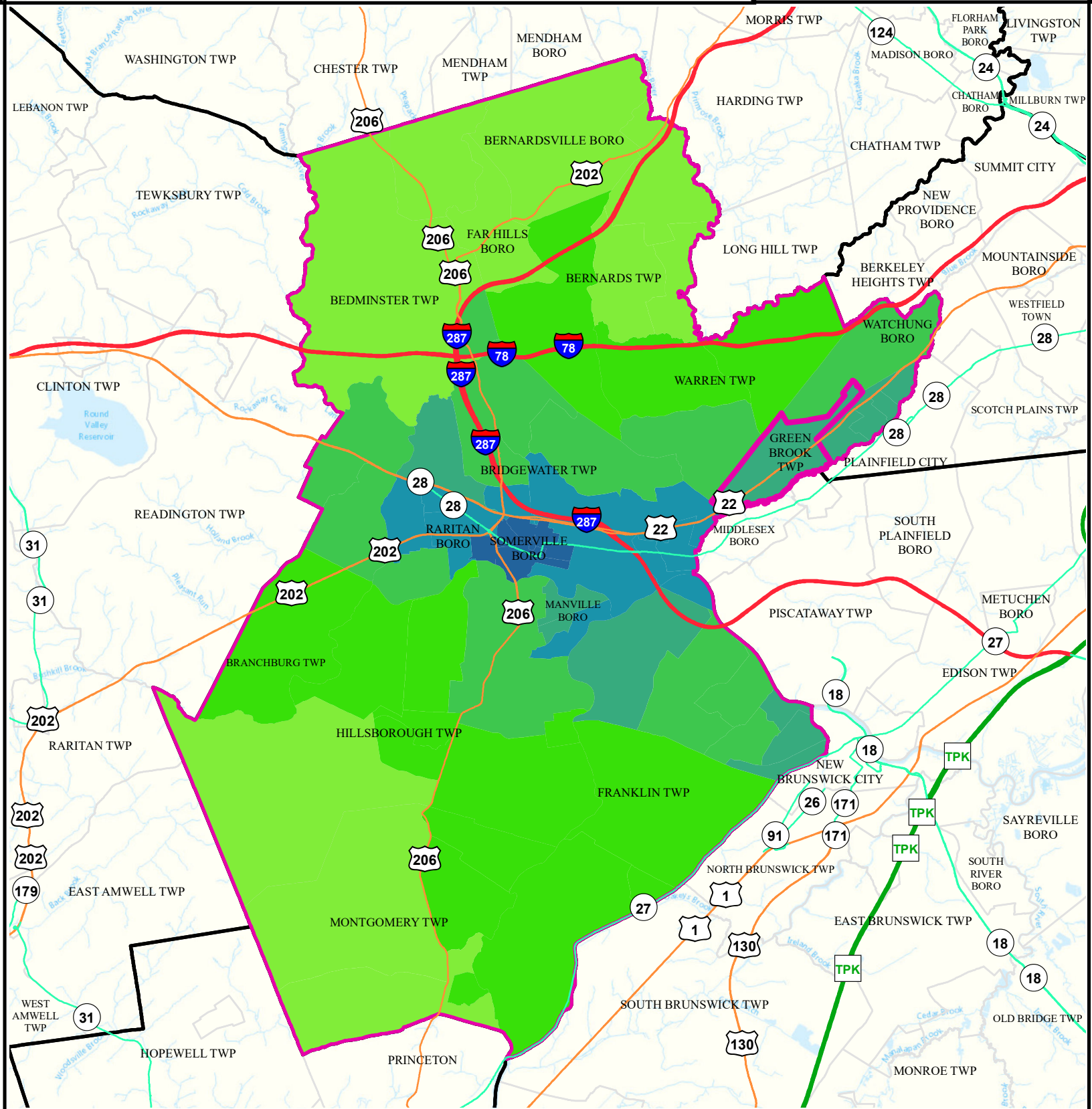
-  Counties
-  GREEN BROOK TWP



Date: 9/26/2022



Miles



Air Non Cancer

GREEN BROOK TWP

SOMERSET

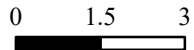
Legend

-  Counties
-  GREEN BROOK TWP

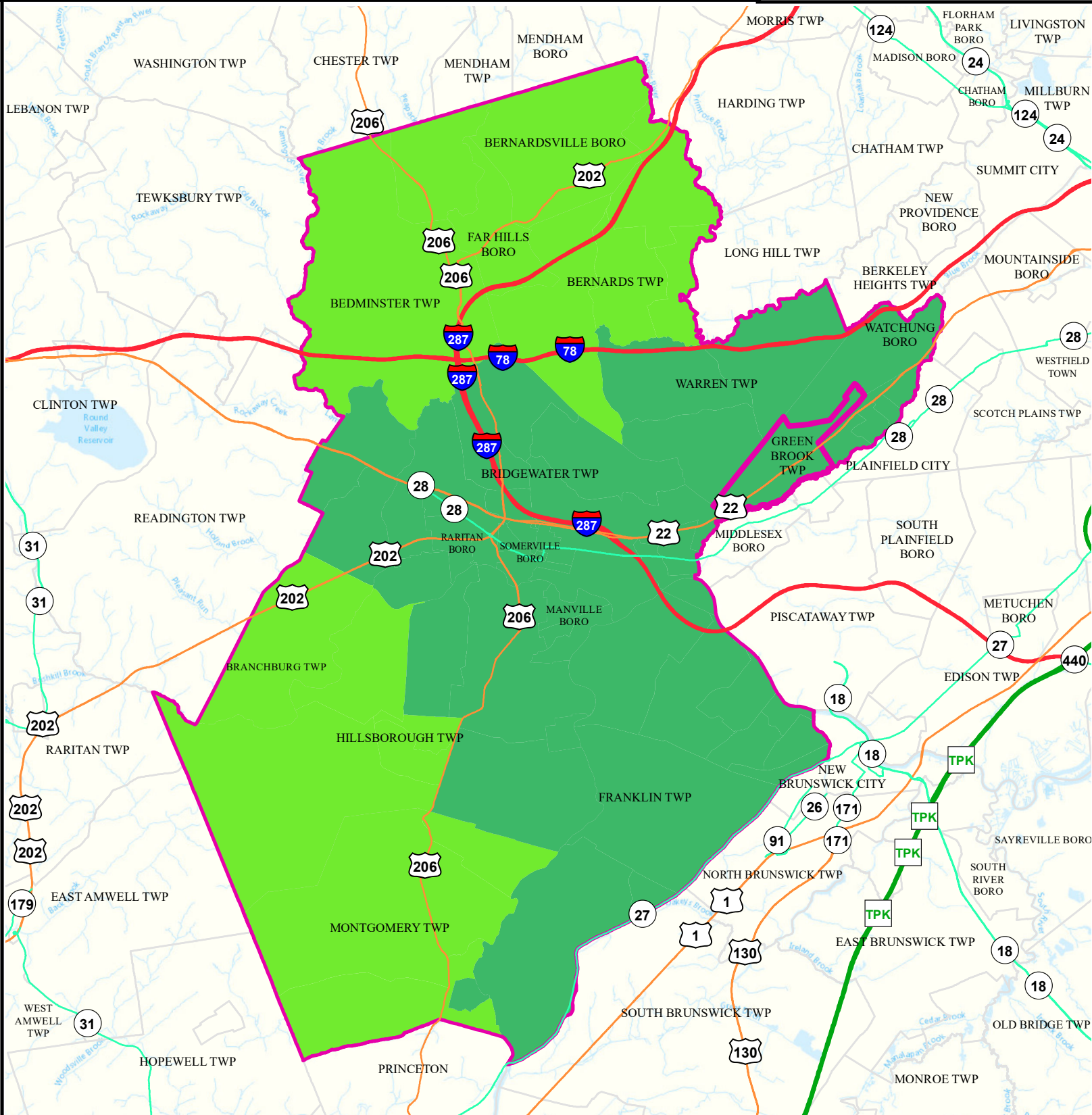
Combined Hazard Index	
	0.75 - 1.00
	1.01 - 2.00
	2.01 - 3.00
	3.01 - 4.00
	4.01 - 8.09



Date: 9/26/2022



Miles





Air Quality Index (AQI)

GREEN BROOK TWP

SOMERSET

Air Quality Index (AQI)
Days above 100 (3 yr Avg)
2018 to 2020

Legend

-  Municipalities
-  GREEN BROOK TWP

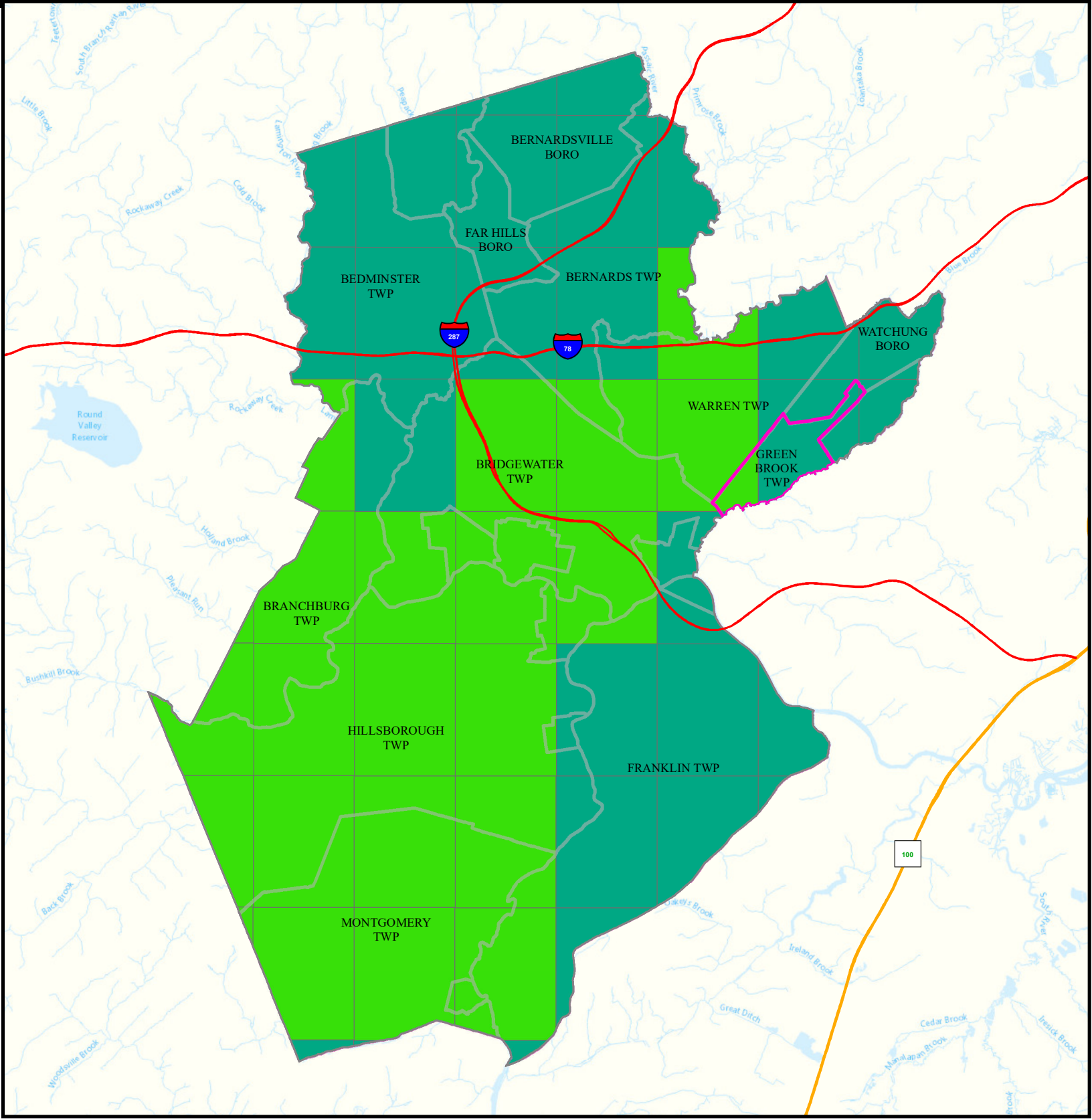
Average AQI Days

- | | |
|---|---|
|  0 - 1 |  3.5 - 6.5 |
|  1.5 - 3 |  7 - 12 |



0 1.5 3
Miles

Date: 4/18/2022



Community Drinking Water

GREEN BROOK TWP

SOMERSET

Legend

- Counties
- GREEN BROOK TWP
- Municipalities

MCL and TT Violations
and AL Exceedances

0

1 - 5

6 - 10

11 - 15

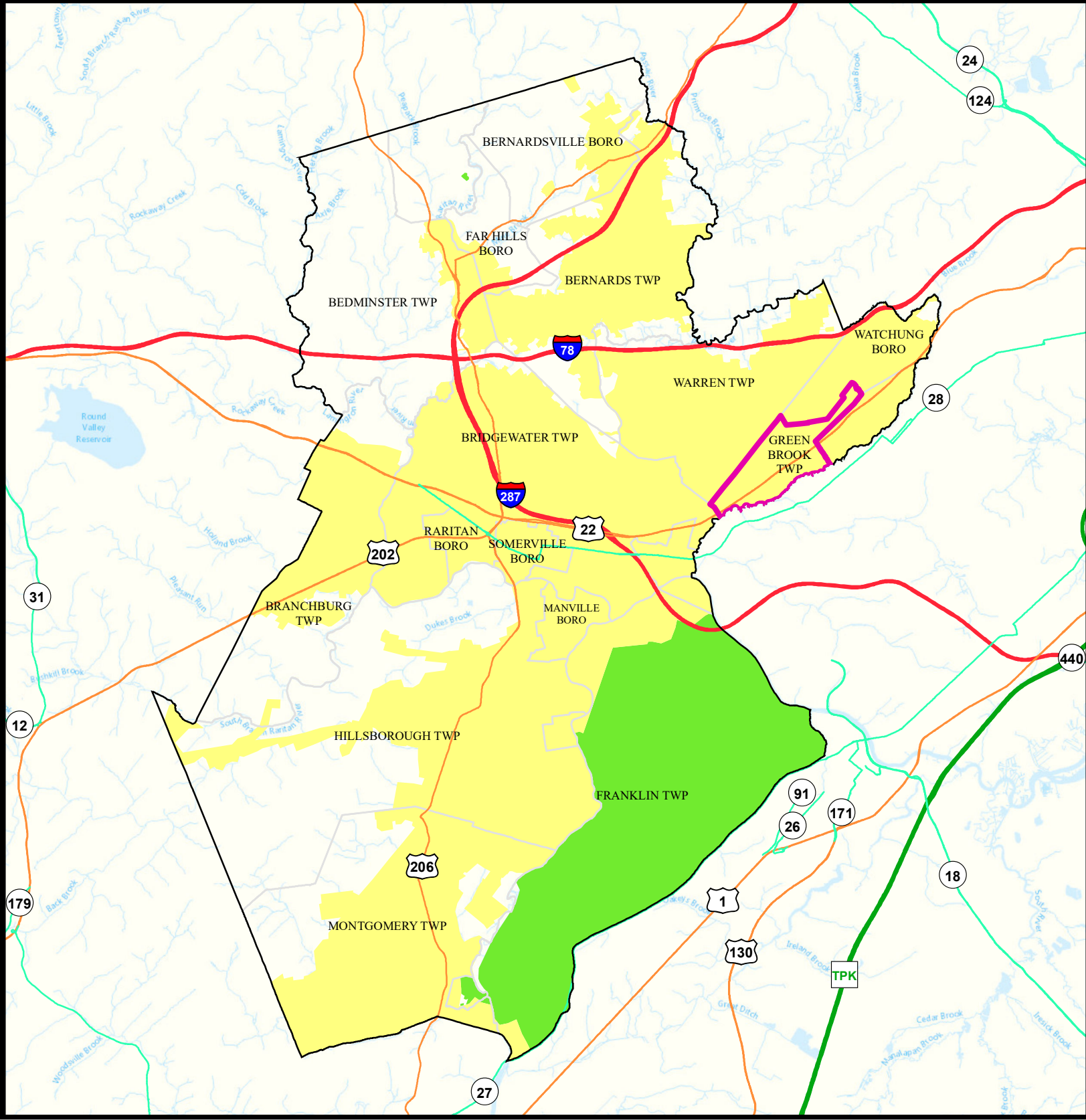
16 - 30



Date: 9/27/2022

0 1.5 3

Miles



Ground Water/Soil

GREEN BROOK TWP

SOMERSET

Legend

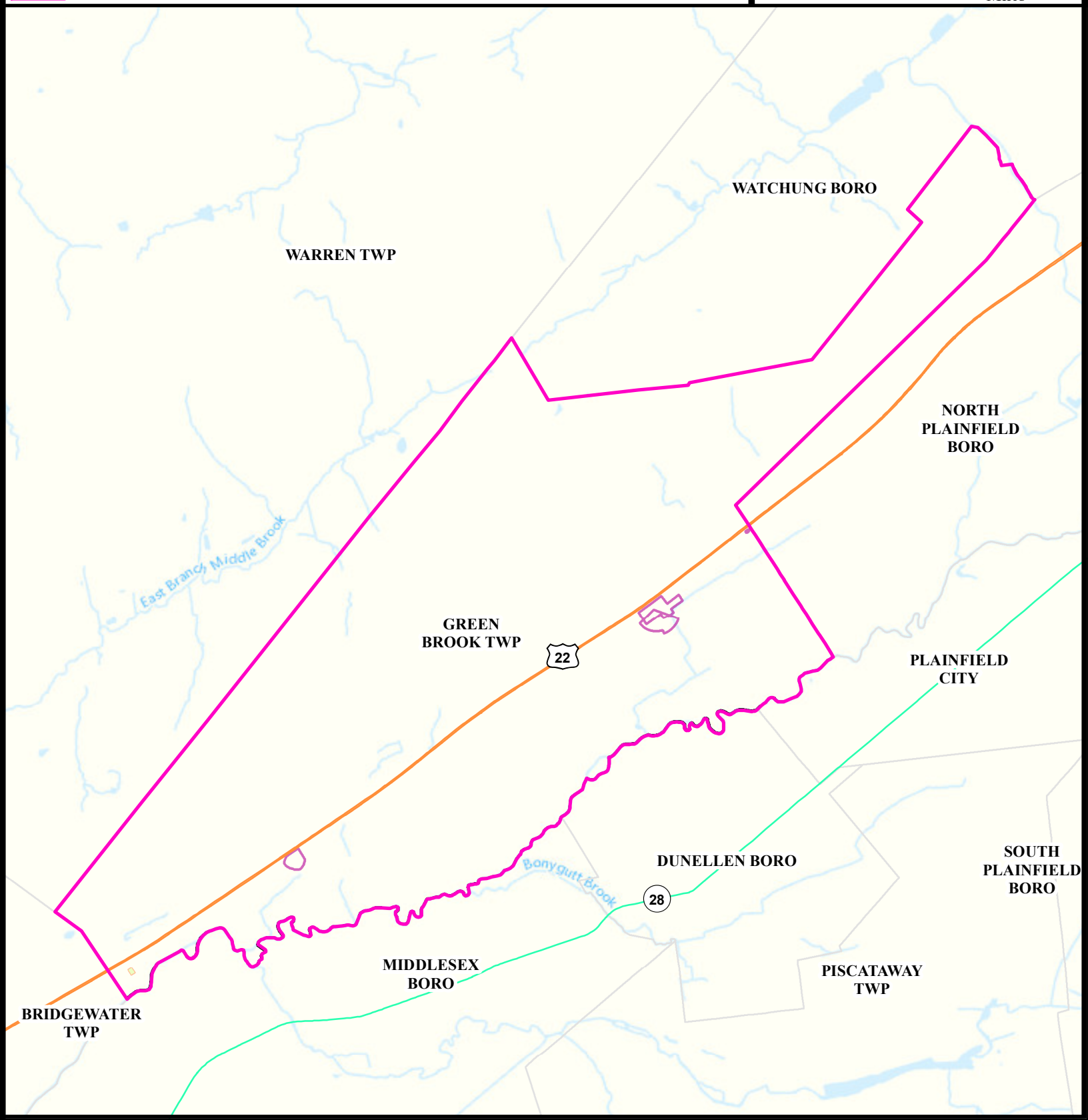
- Counties
- Municipalities
- GREEN BROOK TWP
- Deed Notice Areas
- Groundwater Contamination Areas (CKE)
- Groundwater Contamination Areas (CEA)

N

Date: 5/24/2022

0 0.225 0.45

Miles


















Surface Water Quality

GREEN BROOK TWP


SOMERSET

Legend

Impaired (Percent)	
	NA
	0
	20
	25
	33
	40
	50
	60
	66
	75
	80
	100

-  Counties
-  Municipalities
-  GREEN BROOK TWP

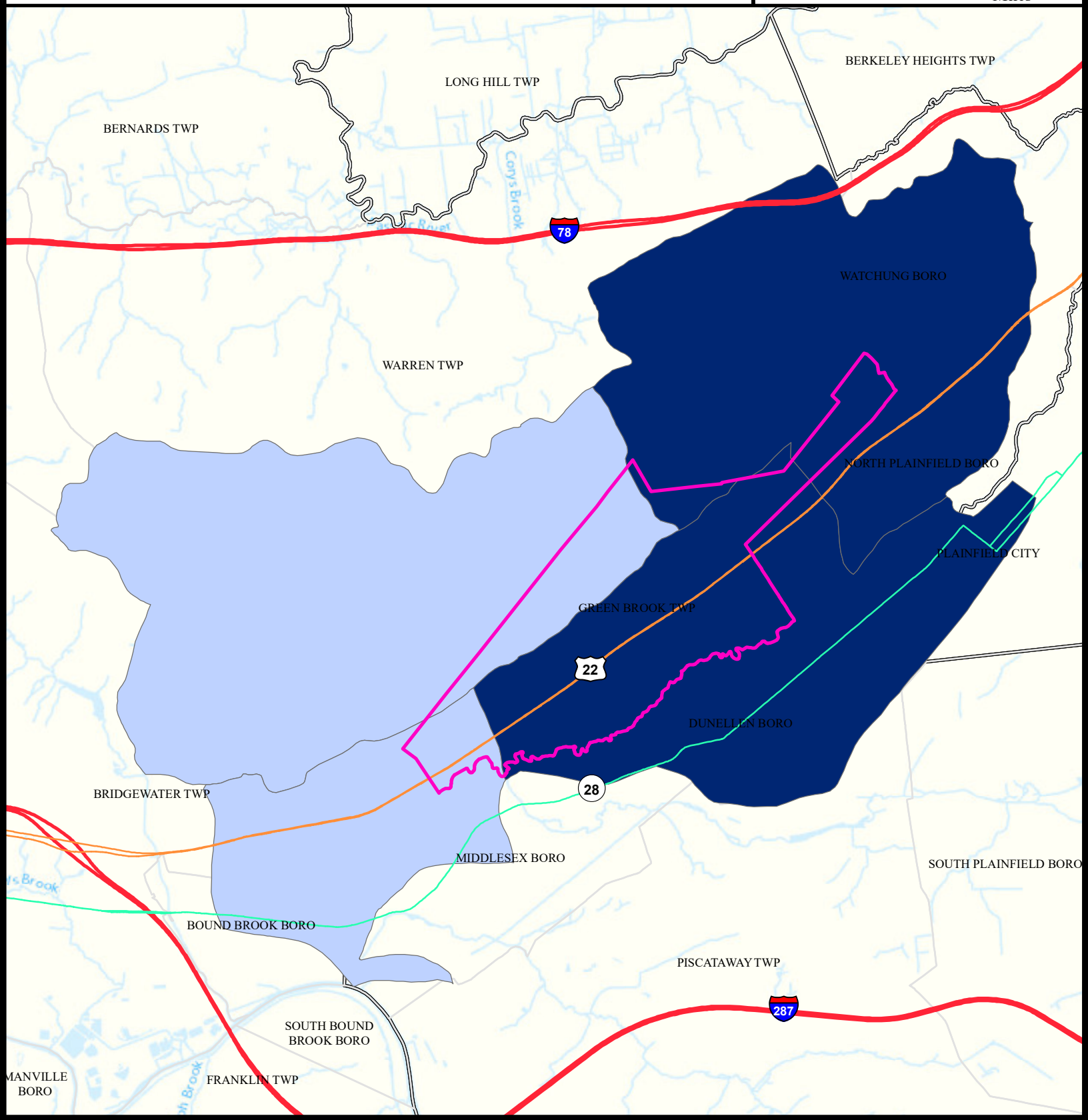
N



Date: 9/22/2022

0 0.5 1

Miles





What is a Designated Use?

New Jersey's [Surface Water Quality Standards \(SWQS\)](#) establish the designated uses of the State's surface waters, classify surface waters based on those uses, and specify the water quality criteria and other policies necessary to attain those uses. Designated uses include water supply for drinking, agriculture and industrial uses, fish consumption, shellfish resources, propagation of fish and wildlife, and recreation.

The table below show the designated use information for your municipality. For more information on Surface Water Quality, see the Healthy Community Planning Report for this municipality.

AU_name	Aquatic_General	Aquatic_Trout	Water_Supply	Recreation	Shellfish	Fish_Consumption
Middle Brook EB	Non Attaining	Non Attaining	Non Attaining	Attaining	NA	Insufficient Data
Green Bk (below Bound Brook)	Non Attaining	NA	Attaining	Non Attaining	NA	Non Attaining
Green Bk (Bound Bk to N Plainfield gage)	Non Attaining	NA	Non Attaining	Non Attaining	NA	Insufficient Data
Stony Brook (North Plainfield)	Non Attaining	NA	Non Attaining	Non Attaining	NA	Insufficient Data

Flooding (Urban Land Cover)

GREEN BROOK TWP

SOMERSET

Legend

Counties

GREEN BROOK TWP

Municipalities

Urban Land

Urban Land Flooded

Toll Road

Interstate

US Highway

State Highway

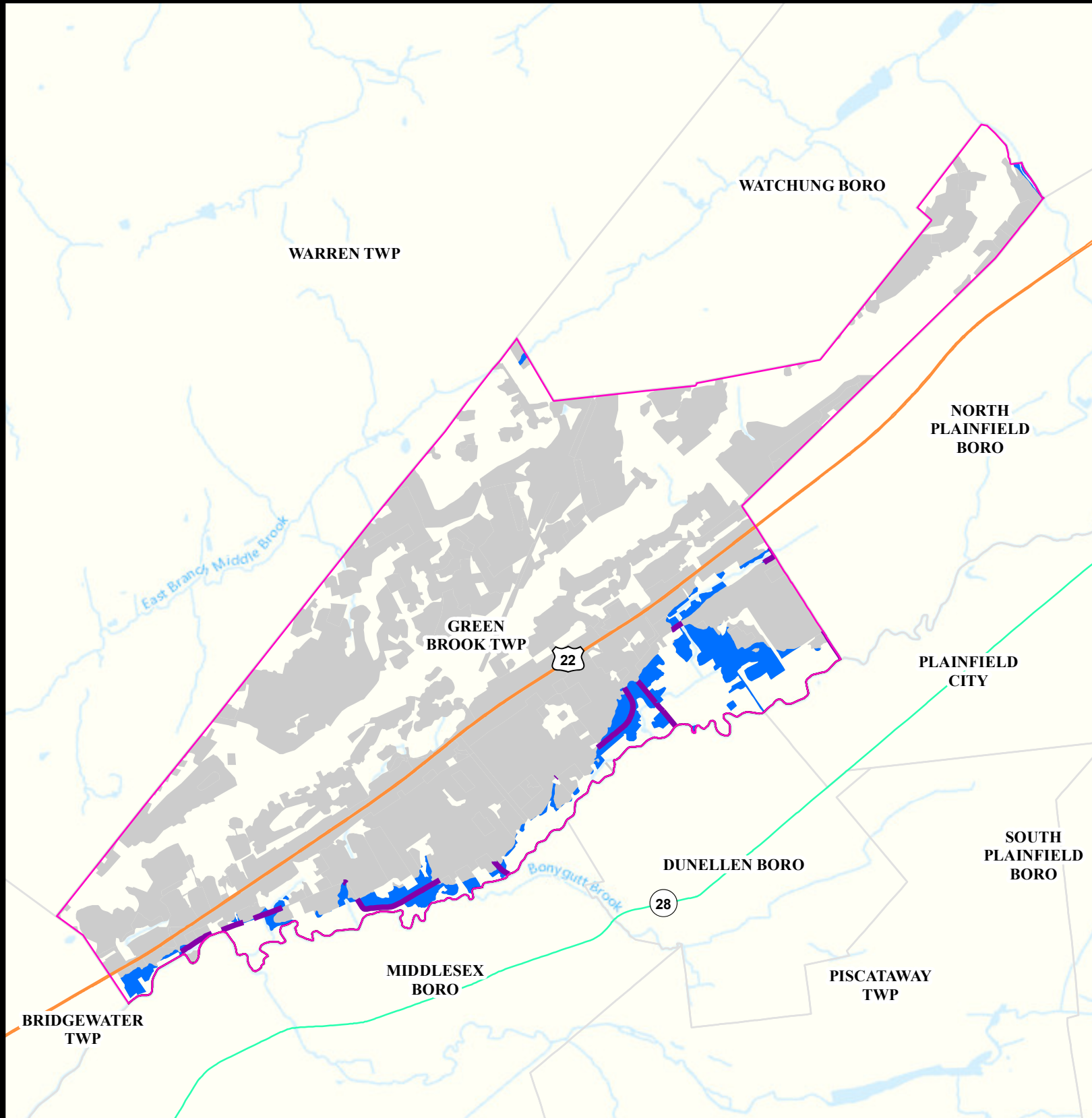
Impacted Roads

Impacted roads show only county level or higher routes in flooding areas.

Date: 4/12/2022

0 0.225 0.45

Miles



Air Permit Sources

GREEN BROOK TWP

SOMERSET

Legend

- Counties
- GREEN BROOK TWP

Facility Type

- Major
- Minor

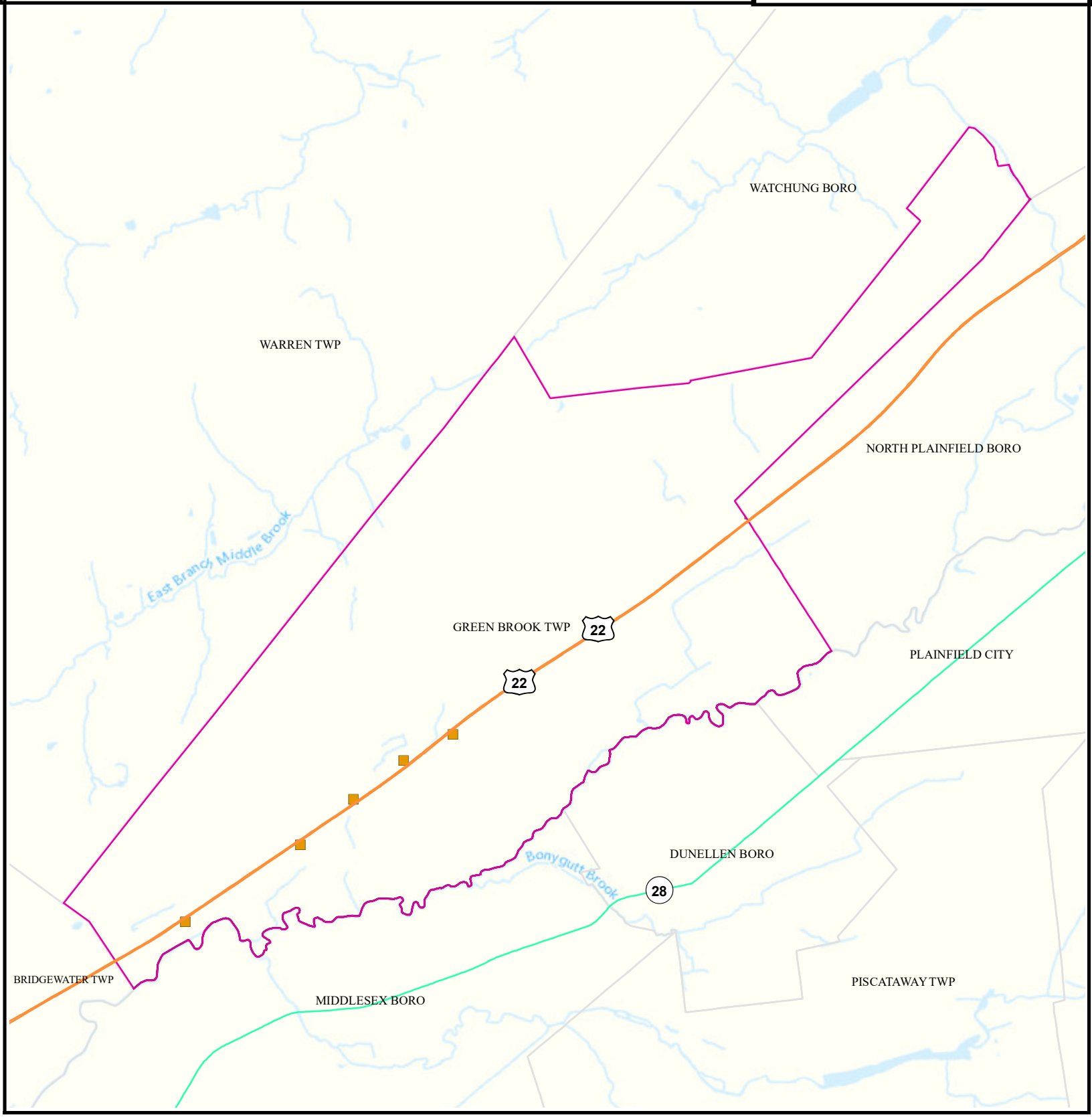


Date: 4/12/2022

0 0.225 0.45



Miles



Contaminated Sites

GREEN BROOK TWP

SOMERSET

Legend

- Counties
- GREEN BROOK TWP
- Municipalities

Known Contaminated Sites

Density Weighting

- 0
- 1
- 2
- 3
- Other

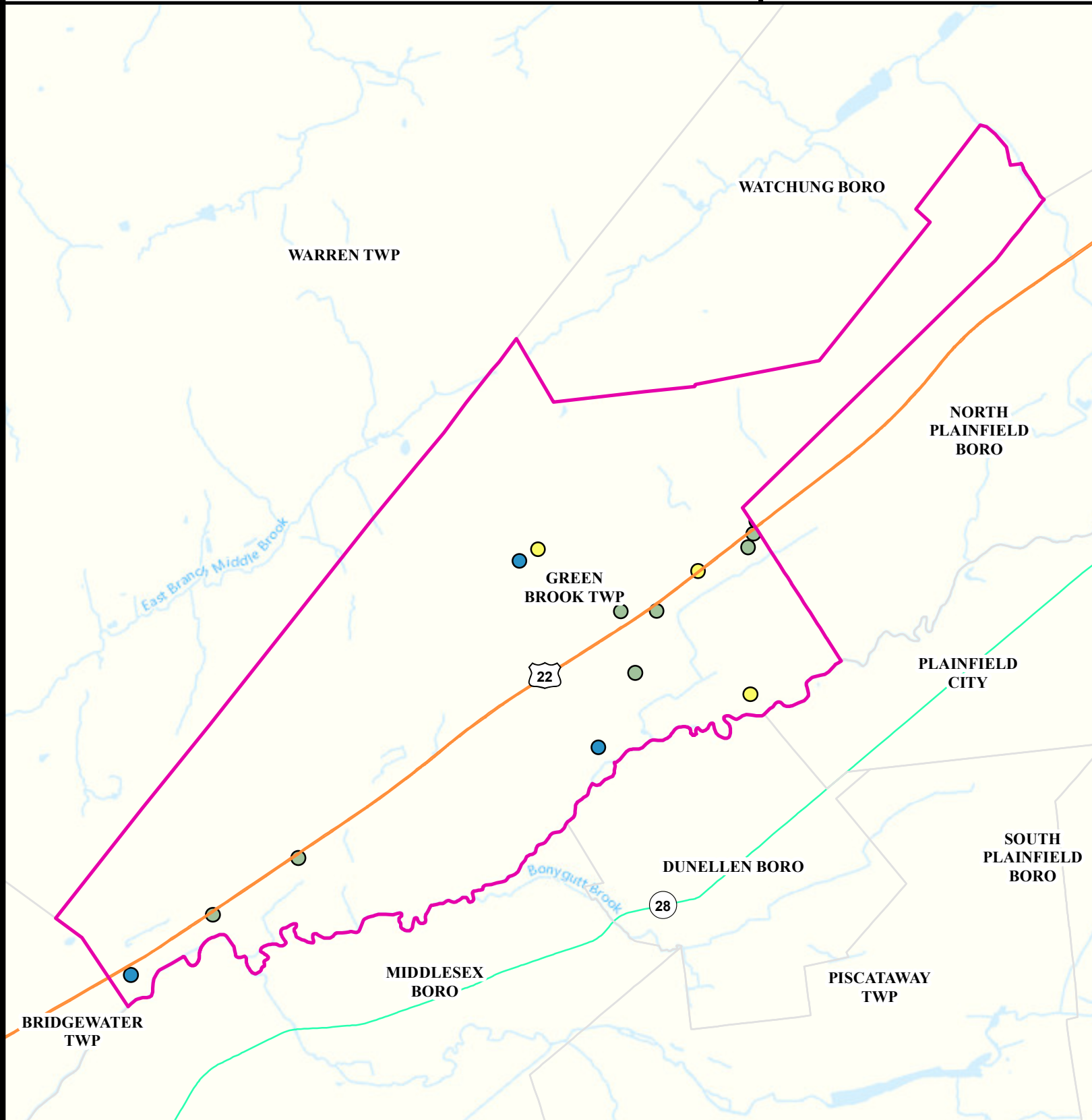


Date: 5/24/2022

0 0.225 0.45



Miles






Scrap Metal Facilities




GREEN BROOK TWP

SOMERSET

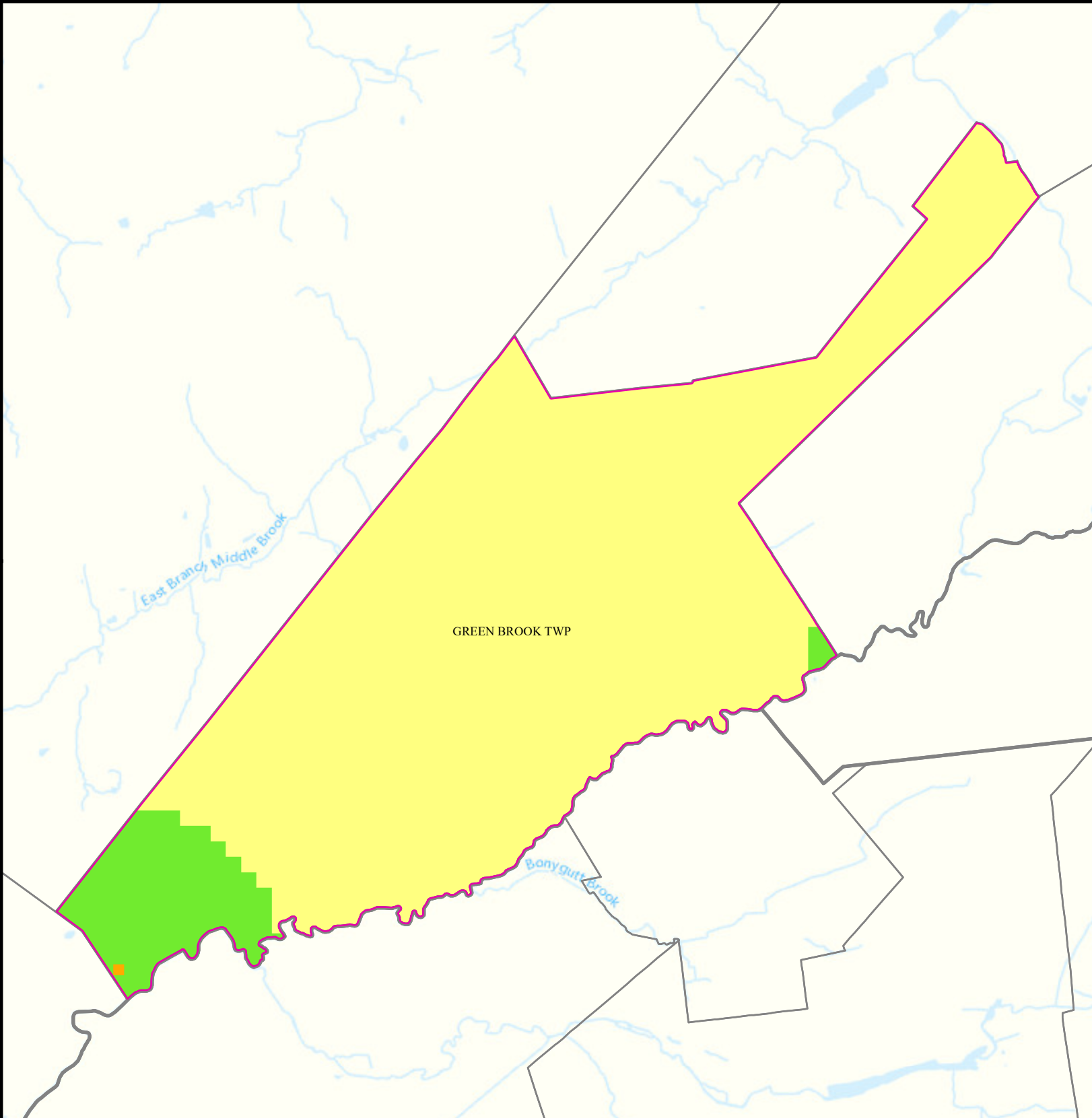
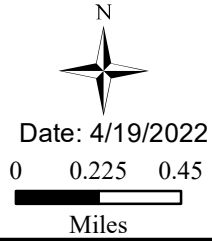
Legend

-  Municipalities
-  GREEN BROOK TWP
-  Scrap Metal Facility

Sites Per Square Mile

- | | |
|--|---|
|  0 - 0.29 |  2.3 - 4.4 |
|  0.30 - 1.1 |  4.5 - 8.3 |
|  1.2 - 2.2 | |

Scrap Metal Processing
Sites per Sq Mile
2022



Open Space

GREEN BROOK TWP


SOMERSET

Legend

- Counties
- GREEN BROOK TWP


- Open Space
- Residential Population > 1/4 Mile from Open Space

N

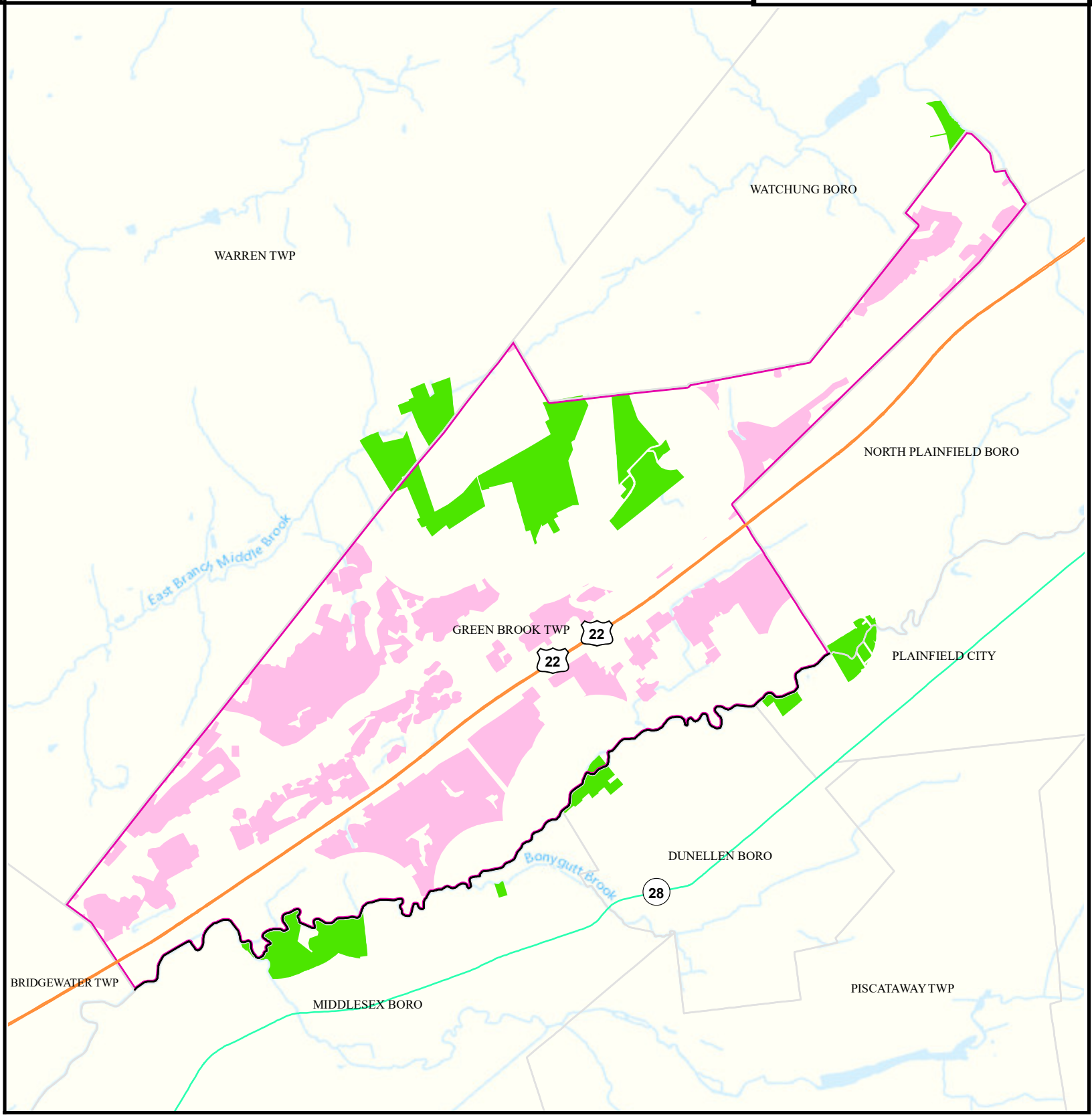


Date: 9/27/2022

0 0.225 0.45



Miles



Traffic


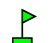
GREEN BROOK TWP

SOMERSET


Legend

- Counties
- GREEN BROOK TWP
- 1000 ft. Road Buffer

- Daily Traffic Volume**
- 25,000 - 50,000
 - 50,001 - 75,000
 - 75,001 - 100,000
 - 100,001 - 125,000
 - 125,000+


Receptors	Count
 Childcare	2
 School	1
Population	2241

N

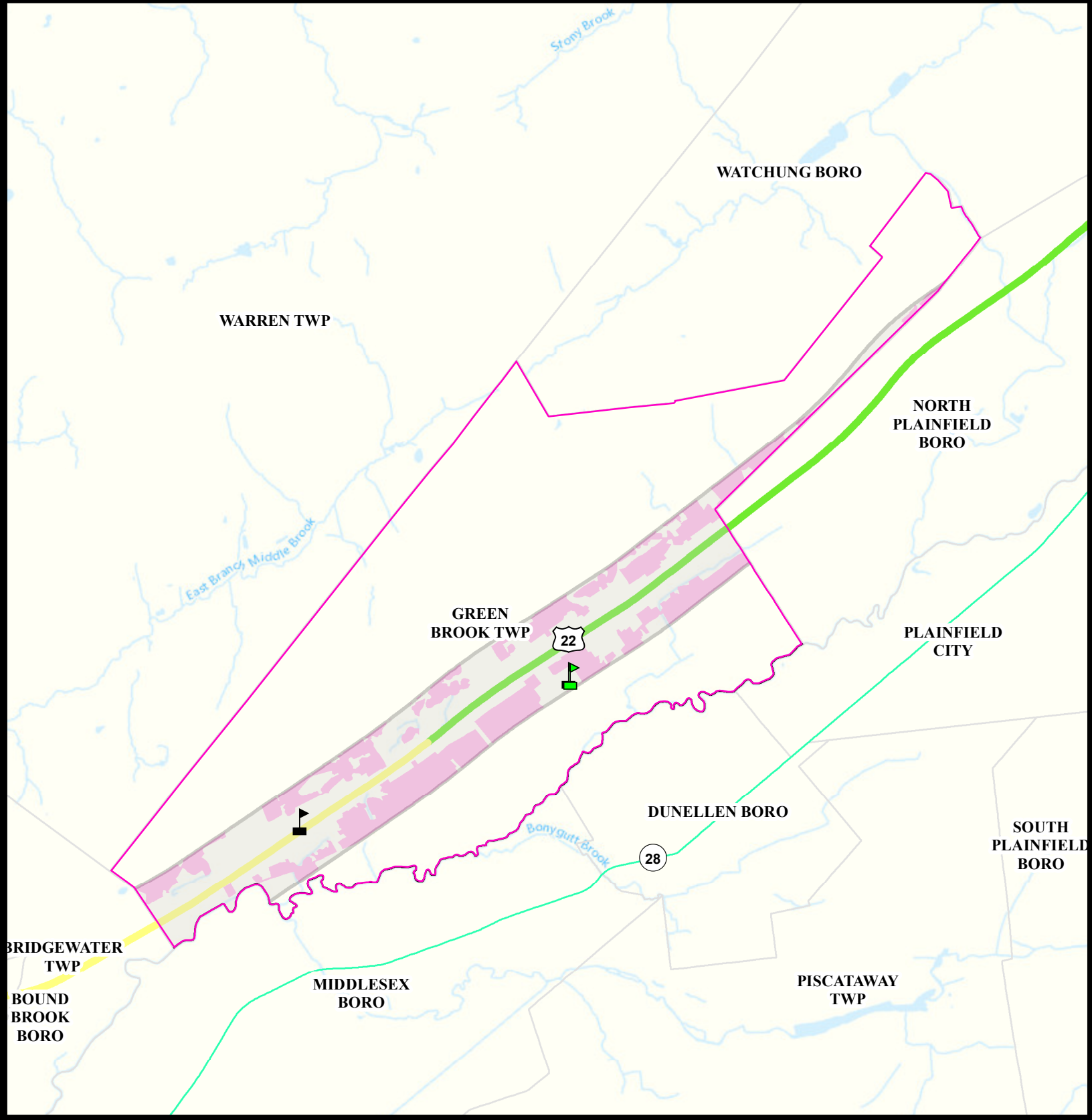


Date: 4/19/2022

0 0.25 0.5



Miles



Low Birth Weight

Green Brook Twp

Somerset

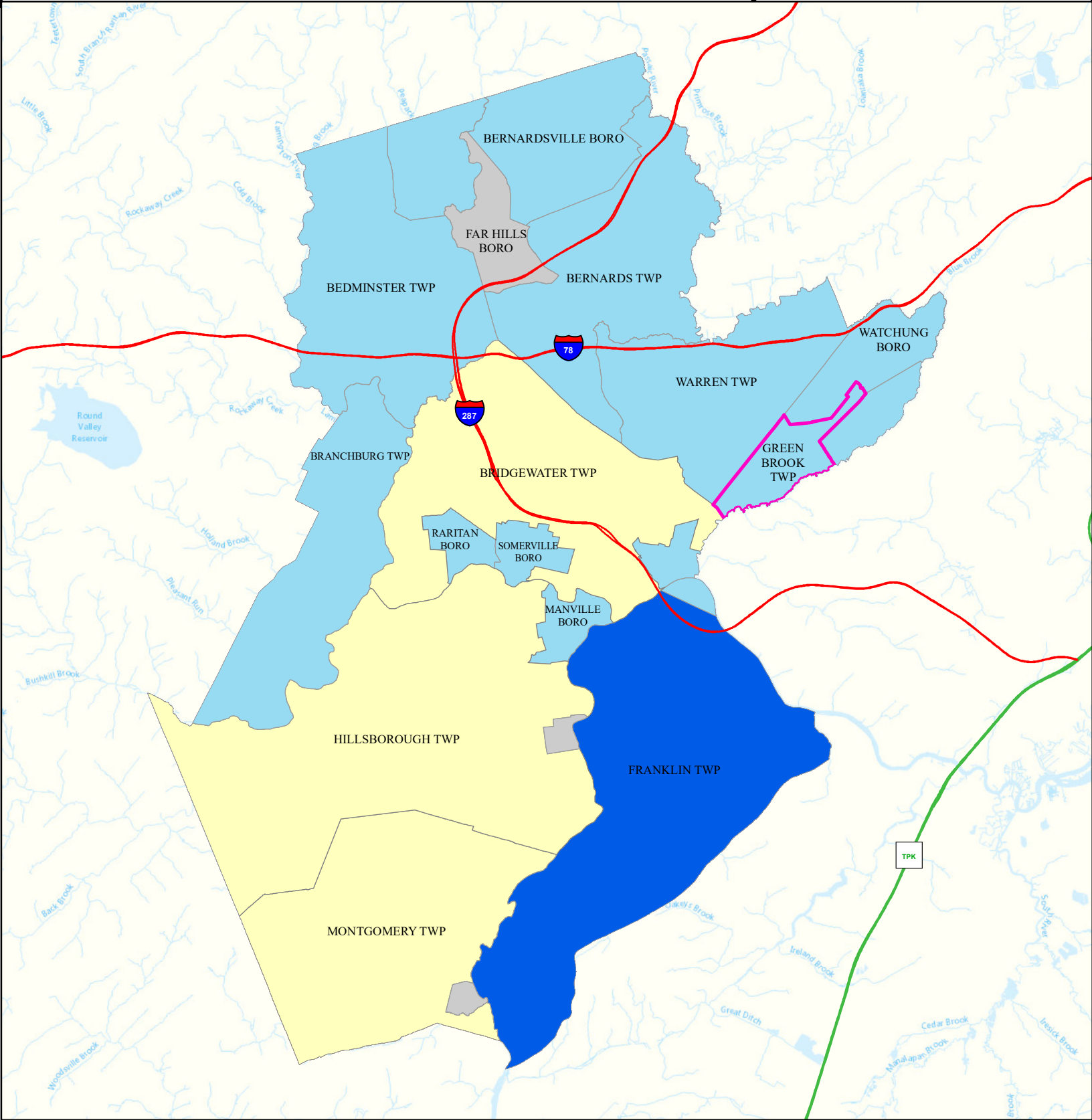
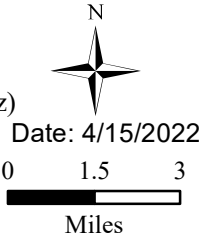
Legend

- Municipalities
- Green Brook Twp

State Comparison

- Above
- Below
- No Difference
- Suppressed

Birth Rate
Low Birth Weight
(% All Births < 5 lb, 8 oz)
2016 to 2020



Age of Housing

GREEN BROOK TWP

SOMERSET

Legend

- Counties
- Municipalities
- GREEN BROOK TWP

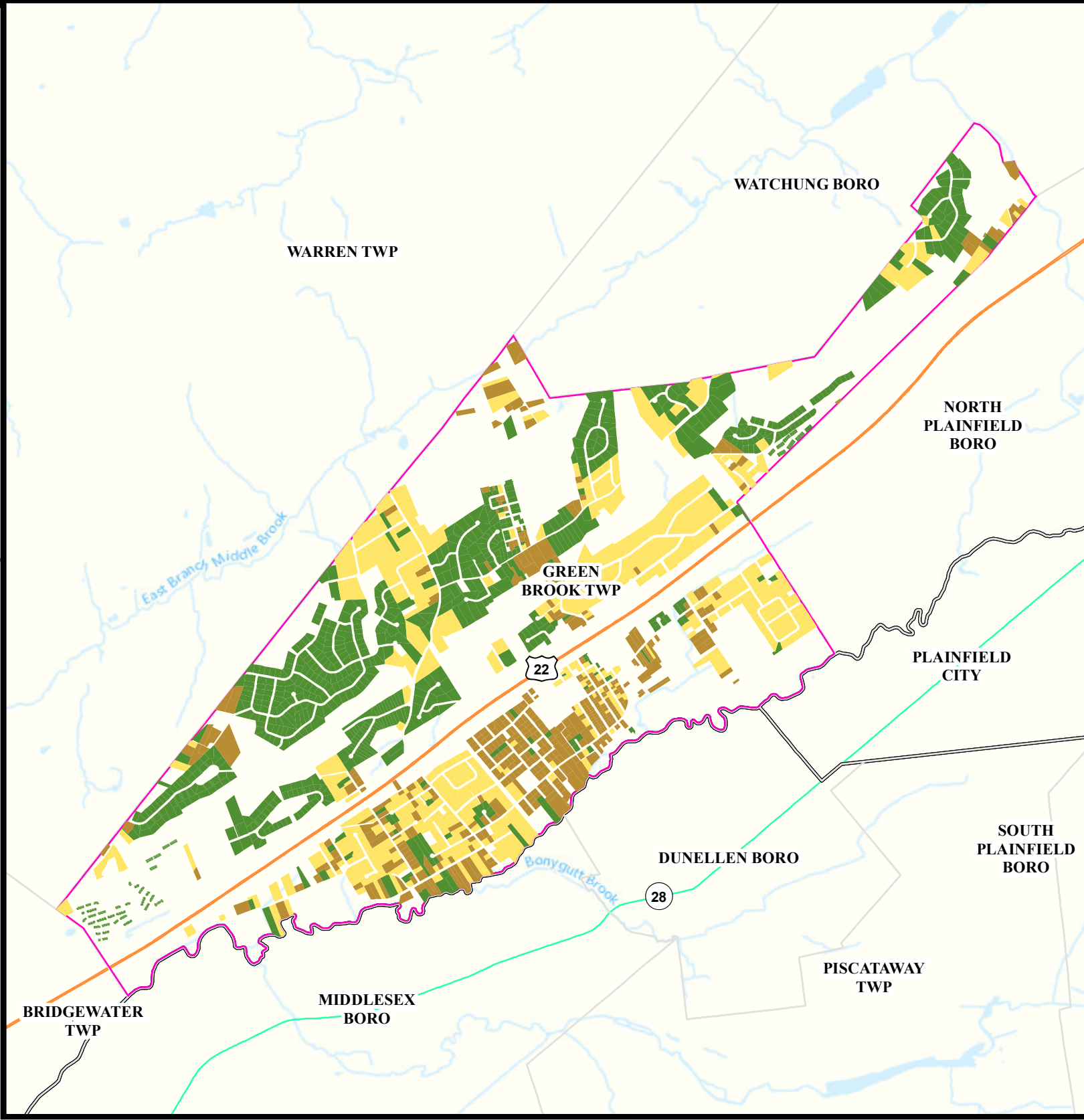
- Year House Constructed**
- Pre 1950
 - Between 1951 and 1978
 - After 1978
 - Unknown

N

Date: 4/12/2022

0 0.225 0.45

Miles





Asthma (Emergency Department)





Green Brook Twp

Somerset

Legend

-  Municipalities
-  Green Brook Twp

State Comparison

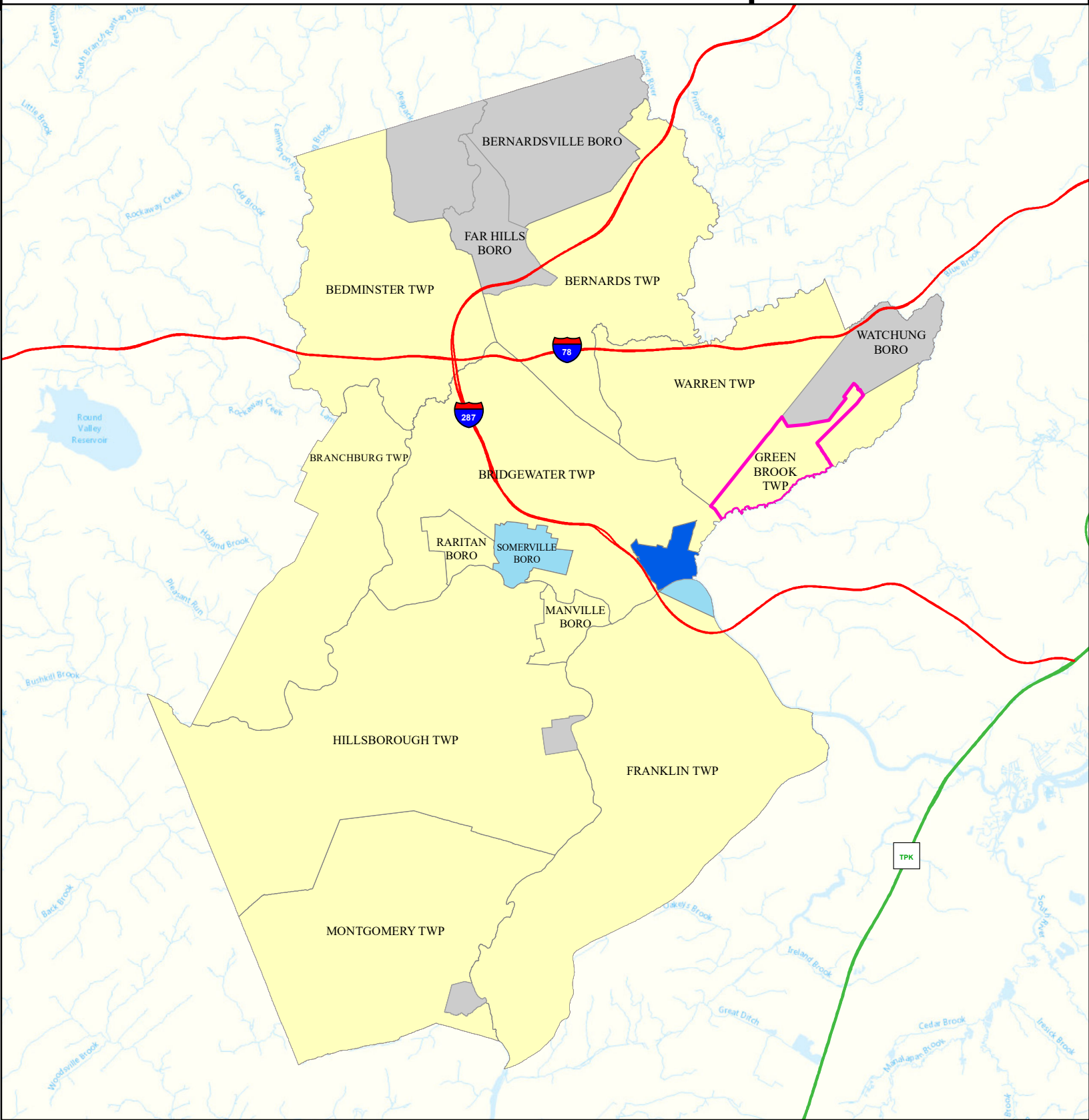
-  Above
-  No Difference
-  Below
-  Suppressed

Age-adjusted Rate
per 10,000 People
2016 to 2019
Emergency Department
Visits for Asthma

Date: 4/12/2022

0 1.5 3

Miles





Heart Attack (AMI) (Inpatient)





Green Brook Twp

Somerset

Legend


-  Municipalities
-  Green Brook Twp

State Comparison

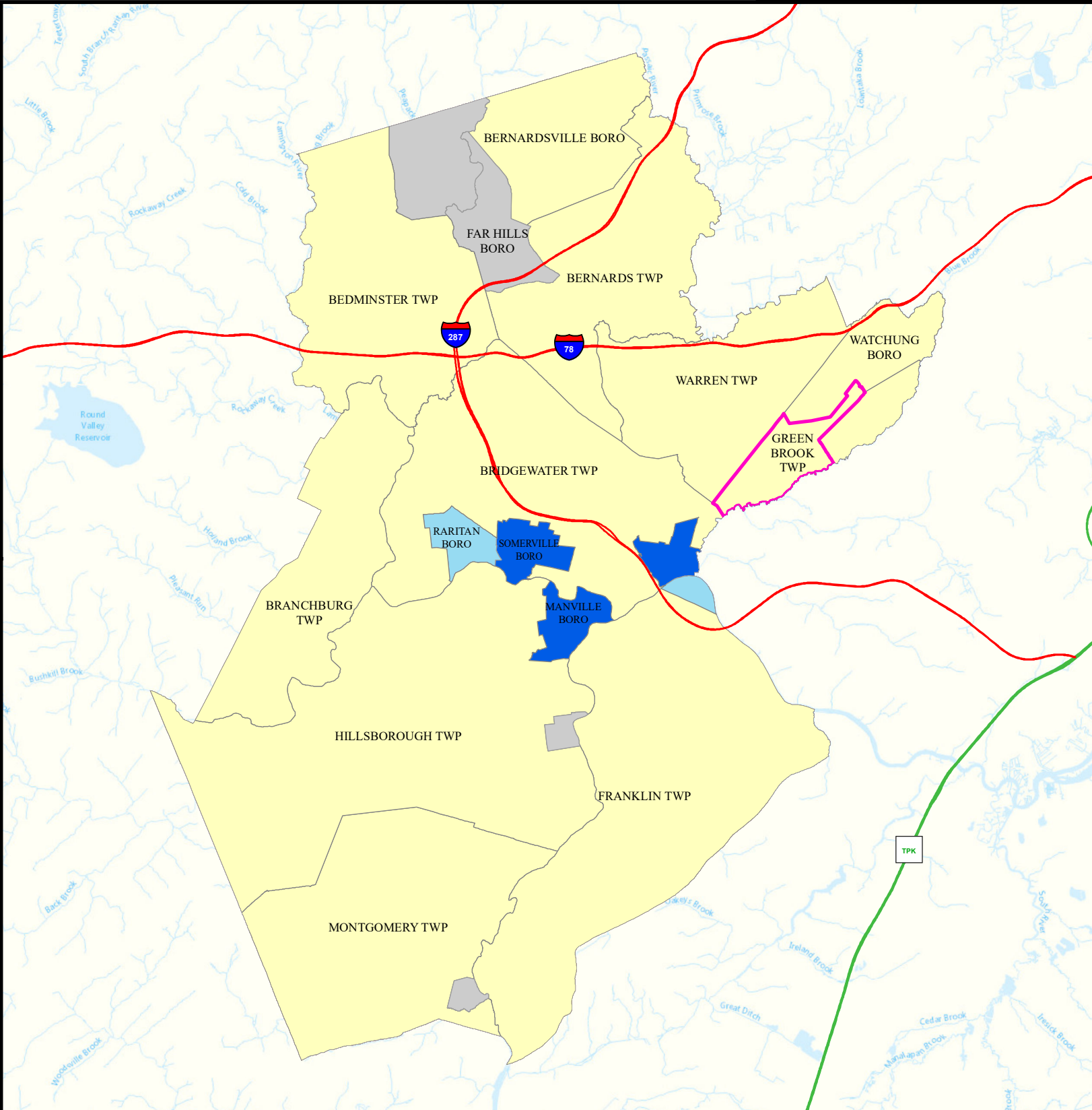
-  Above
-  No Difference
-  Below
-  Suppressed

Age-adjusted Rate
per 10,000 People
2016 to 2019
Inpatient Visits for AMI
(Acute Myocardial Infarction) 0 1.25 2.5

Date: 4/11/2022



Miles





Heart Disease Deaths





Green Brook Twp

Somerset

Legend

-  Municipalities
-  Green Brook Twp


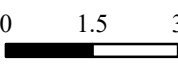
State Comparison

-  Above
-  No Difference
-  Below
-  Suppressed

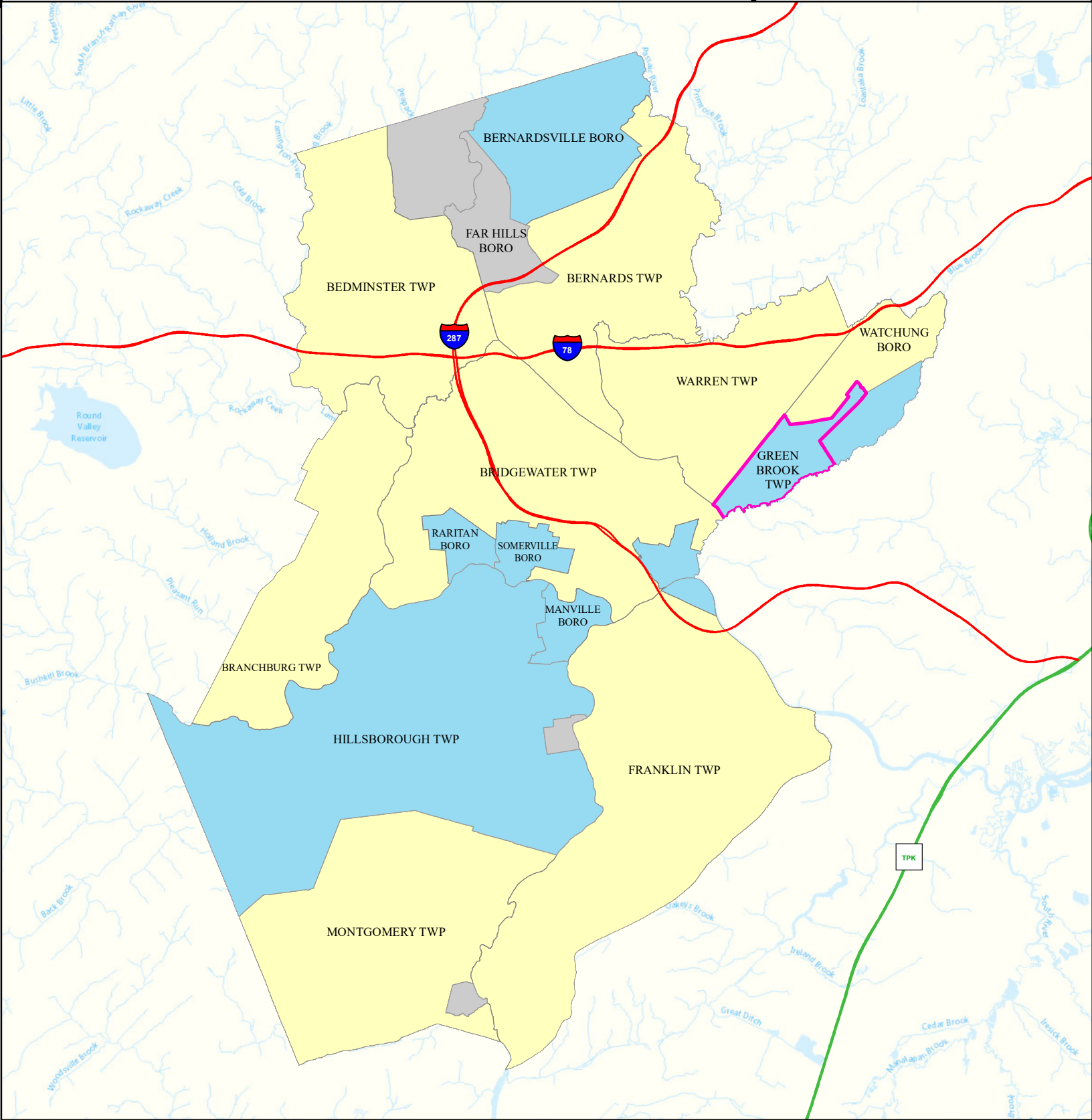
Age-adjusted Death Rate
per 100,000 People
2015 to 2019

Deaths for Heart Disease

Date: 4/16/2022

Miles



COPD (Emergency Department)

Green Brook Twp

Somerset

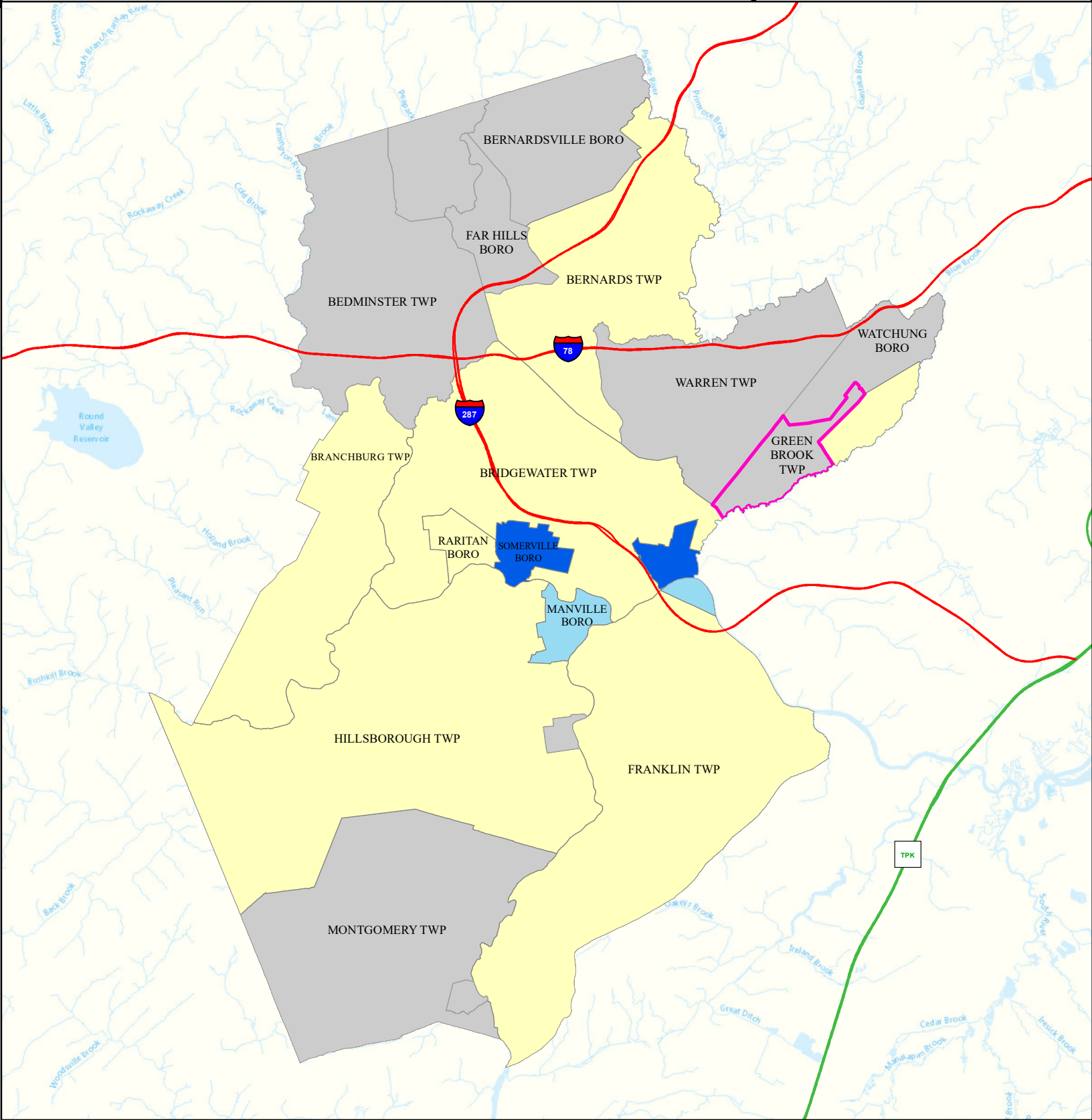
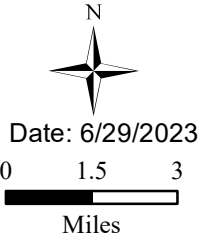
Legend

- Municipalities
- Green Brook Twp

State Comparison

- Above
- Below
- No Difference
- Suppressed

Age-adjusted Rate
per 10,000 People
2016 to 2019
Emergency Department
Visits for COPD





Stroke (Inpatient)





Green Brook Twp

Somerset

Legend

-  Municipalities
-  Green Brook Twp

State Comparison

-  Above
-  No Difference
-  Below
-  Suppressed

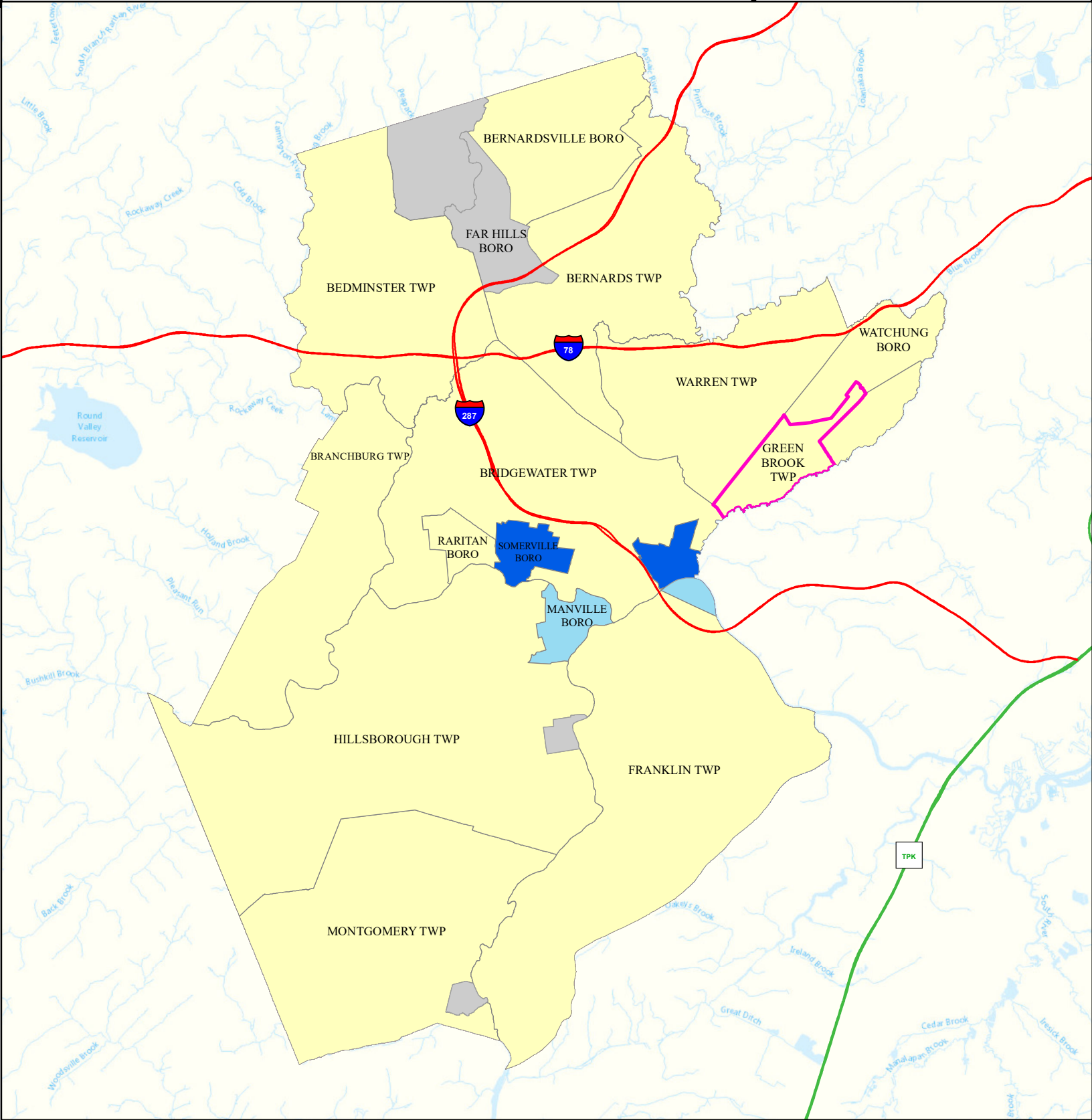
Age-adjusted Rate
per 10,000 People
2016 to 2019
Inpatient Visits
for Stroke



Date: 4/14/2022

0 1.5 3

Miles





All Cancer Deaths





Green Brook Twp

Somerset

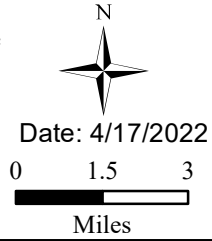
Legend

-  Municipalities
-  Green Brook Twp

State Comparison

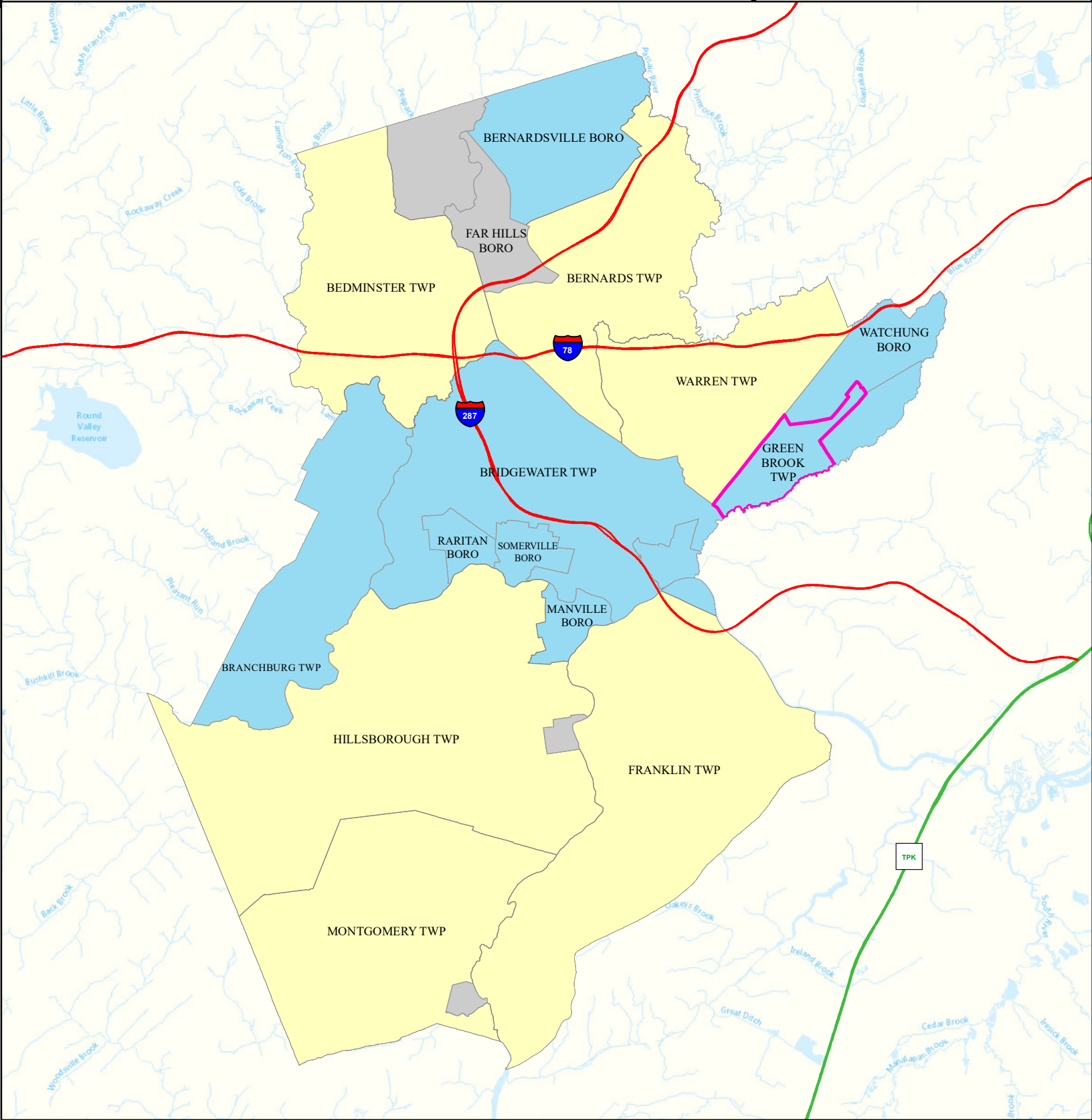
-  Above
-  Below
-  No Difference
-  Suppressed

Age-adjusted Death Rate
per 100,000 People
2015 to 2019
Deaths for Cancer



Date: 4/17/2022

0 1.5 3
Miles





Lung Cancer Deaths





Green Brook Twp

Somerset

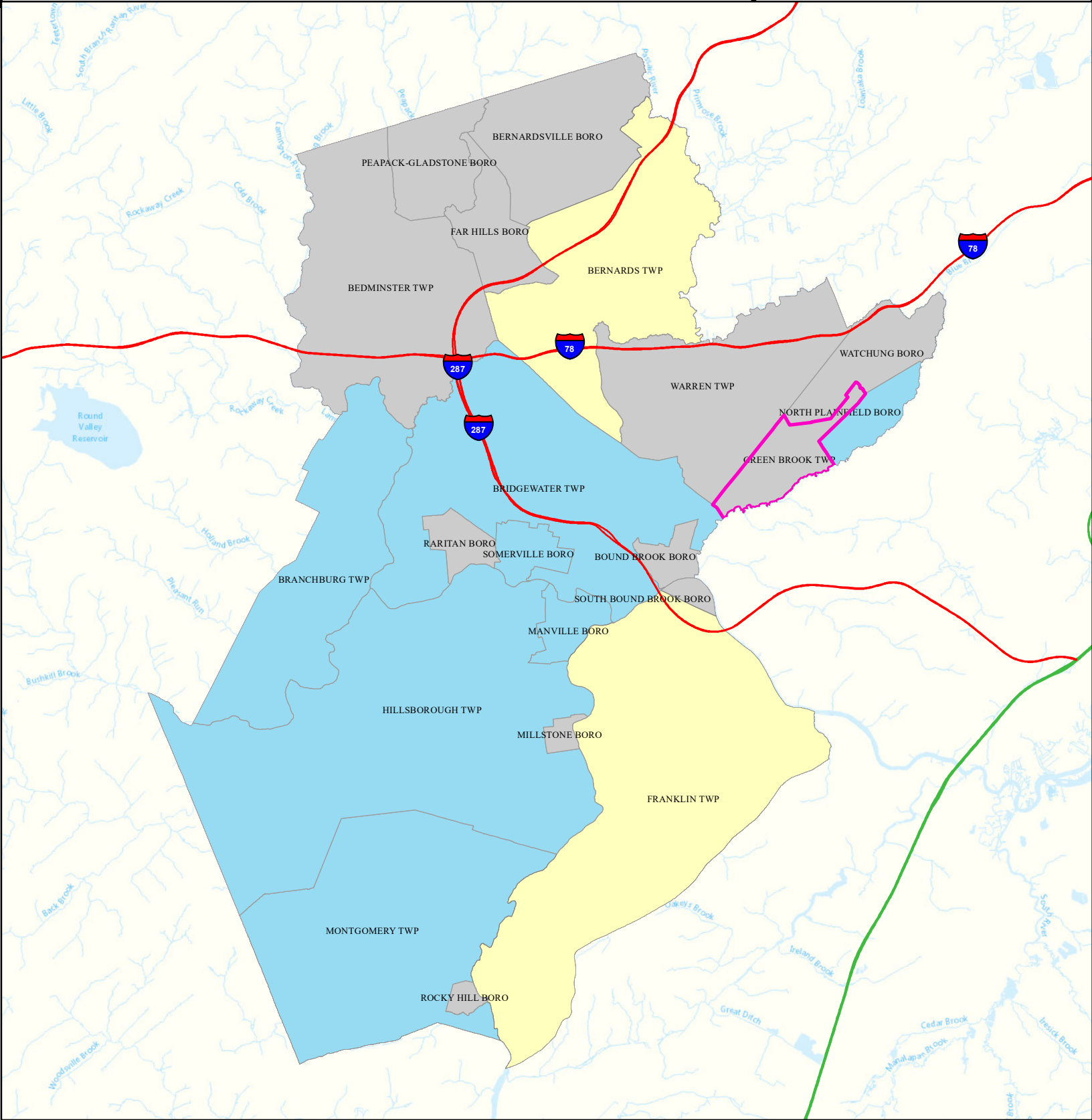
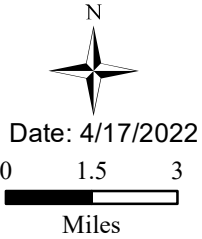
Legend

-  Municipalities
-  Green Brook Twp

State Comparison

-  Above
-  Below
-  No Difference
-  Suppressed

Age-adjusted Death Rate
per 100,000 People
2015 to 2019
Deaths for Lung Cancer



Smoking

Green Brook Twp

Somerset

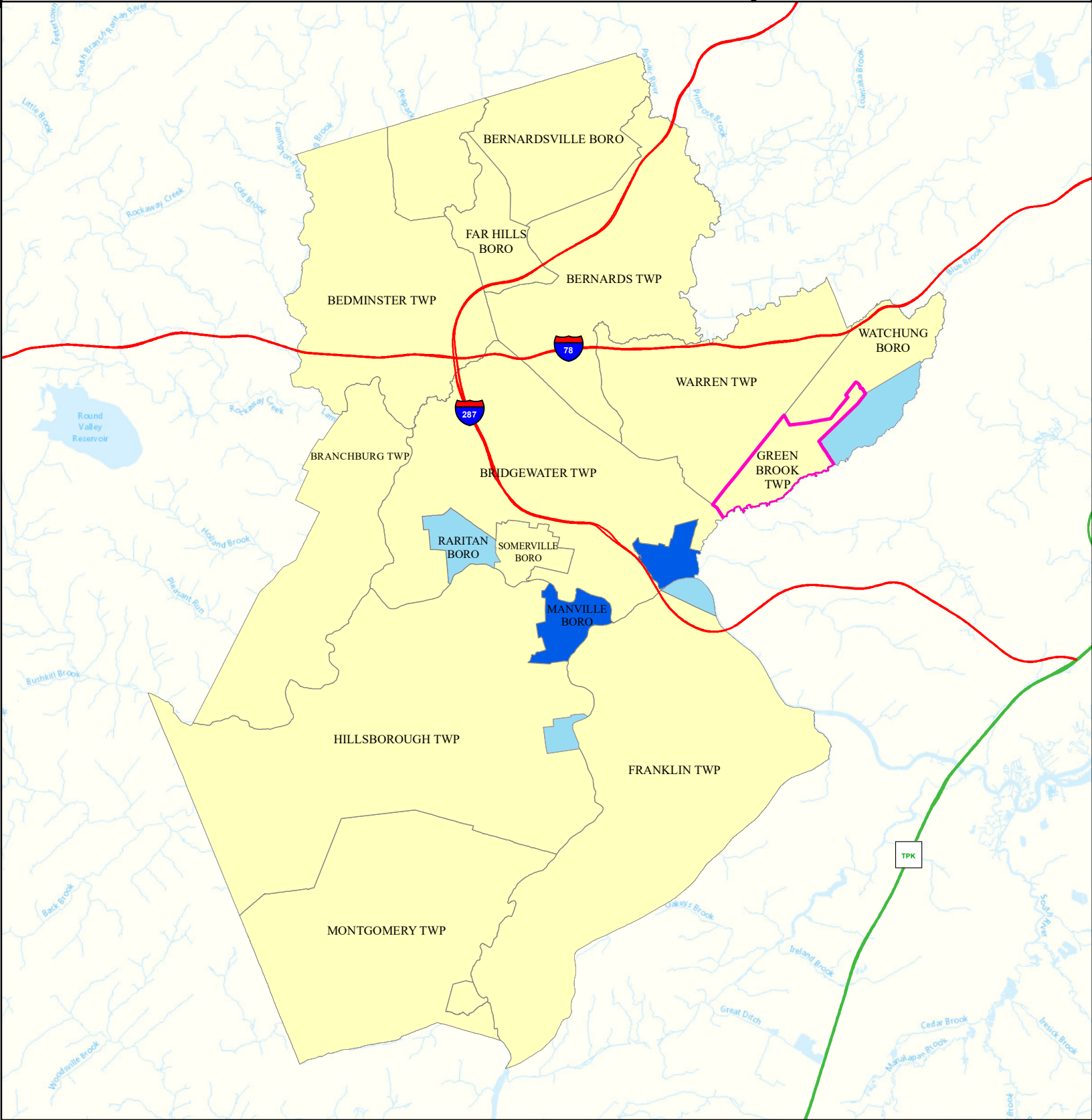
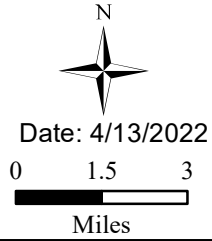
Legend

- Municipalities
- Green Brook Twp

State Comparison

- Above
- Below
- No Difference
- Suppressed

Smoking Rate
Per Municipal
% of Adults
2018



Obesity

Green Brook Twp

Somerset

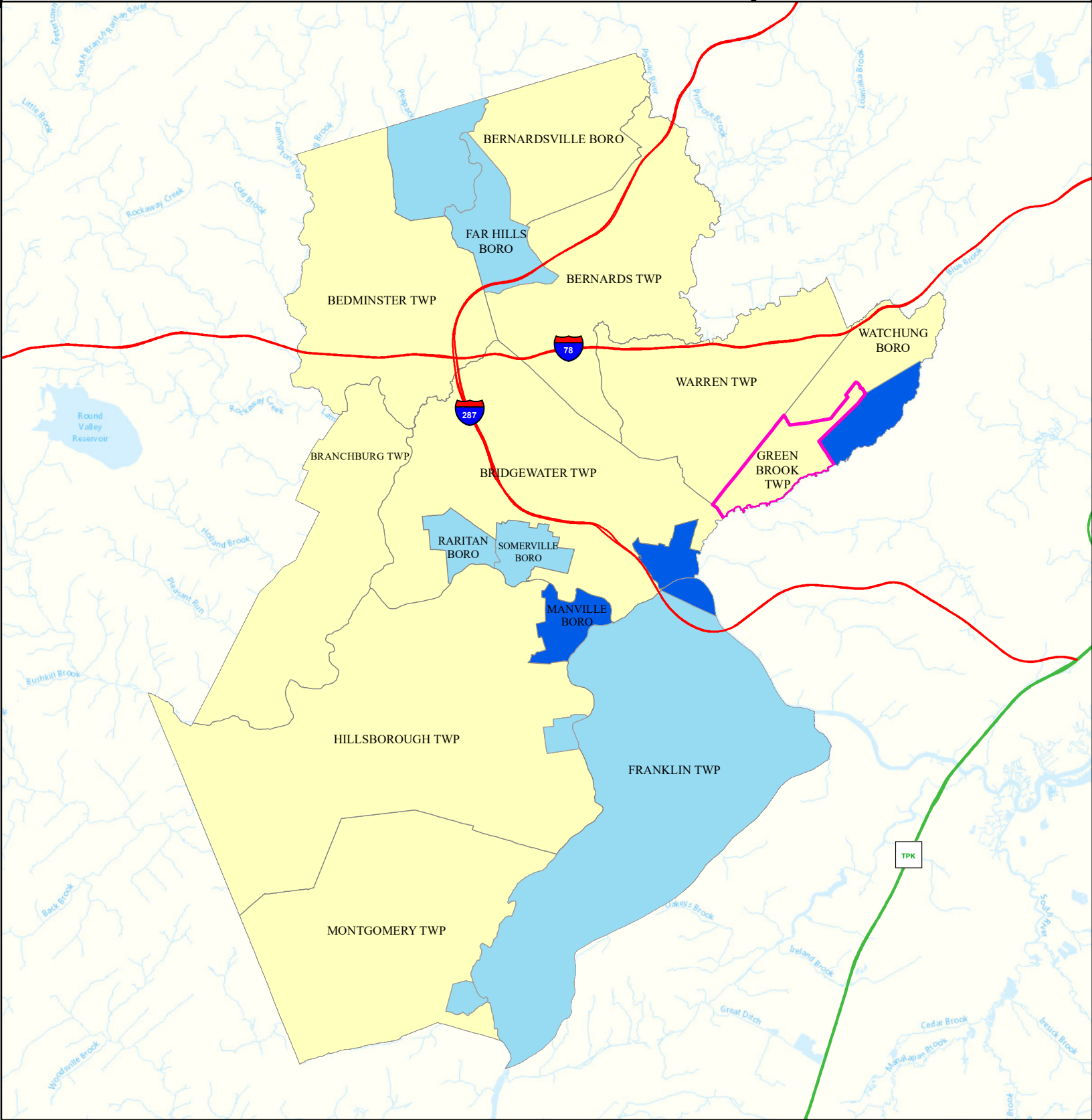
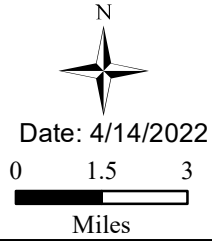
Legend

- Municipalities
- Green Brook Twp

State Comparison

- Above
- Below
- No Difference
- Suppressed

Obesity Rate
Per Municipal
% of Adults
2018





Heat Related Illness (Emergency Department)

Green Brook Twp

Somerset

Legend

-  Municipalities
-  Green Brook Twp

State Comparison

-  Above
-  Below
-  No Difference
-  Suppressed

Age-adjusted Rate
per 10,000 People
2016 to 2019
Emergency Department
Visits for
Heat Related Illness

